

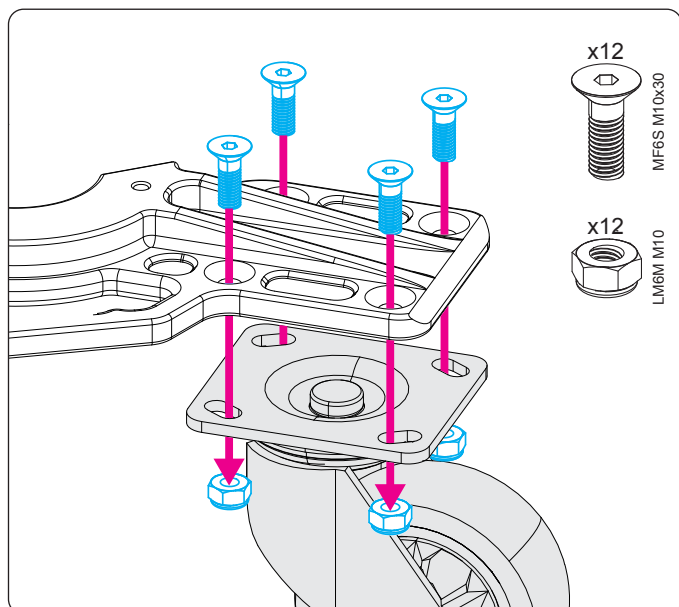
Product Manual

Air Jack 60/90 Competition Skates

570-05-201

570-05-202

Air jack skate assembly

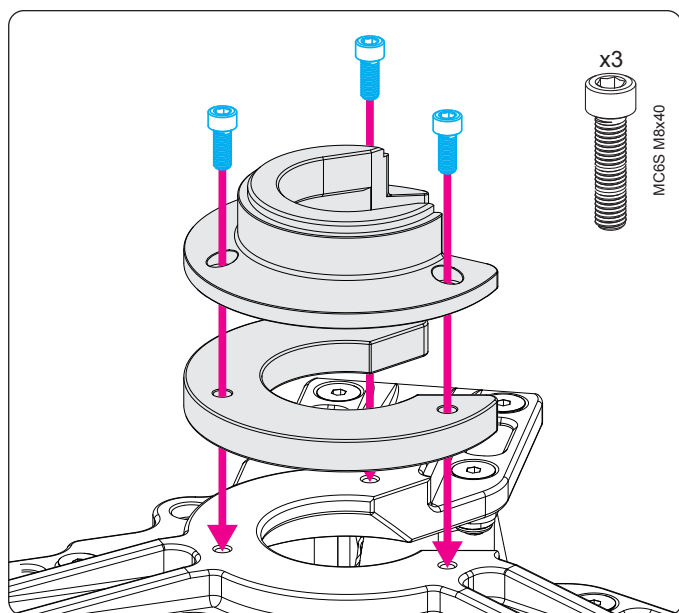


Wheel assembly instruction

To assemble the Air Jack Skates, both for Air Jack 60C and Air Jack 90C options.

1. Position the wheels in the designated mounting points on the aluminum skate body.
2. Use the included stainless steel MF6S M10x30 bolts and LM6M M10 lock nuts to secure the wheels.
3. Ensure correct alignment of all components before tightening.
4. Tighten the bolts and nuts to a torque of 40-45 Nm.

The supplied M10 lock nuts are self-locking and do not require any thread-locking adhesive.



Air Jack 90C - Top assembly instructions

For the Air Jack 90C skate with part number 570-05-202, follow this instruction:

1. Place the included aluminum spacer plate on top of the air jack skate body.

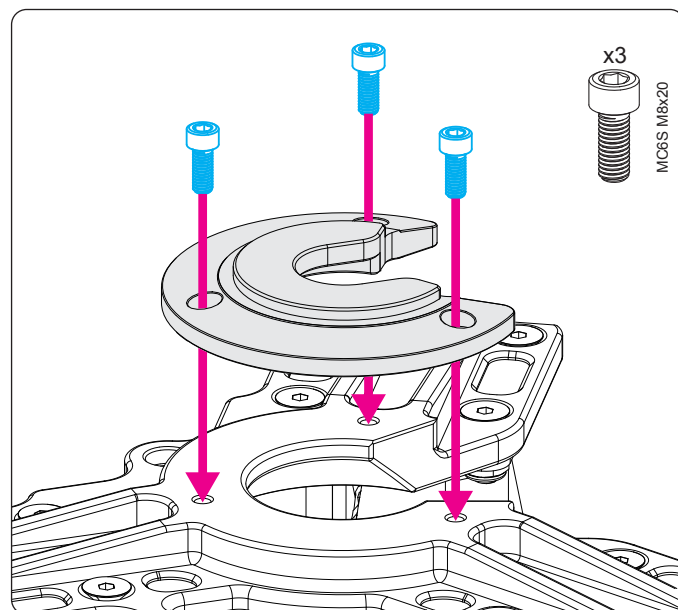
2. Position the top unit on top of the spacer plate.

3. Ensure that the three bolt holes are correctly aligned between the spacer, the top unit, and the base, so that all three openings face the correct orientation.

4. Insert the three included MC6S M8x40 stainless steel bolts into the mounting holes.

5. Verify proper alignment, then tighten the bolts evenly to a torque of 17 Nm.

Optional thread locker can be added, but is not required if accurate tightening torque is applied.



Air Jack 60C - Top assembly instructions

For the Air Jack 60C skate with part number 570-05-201, follow this instruction:

1. Place the top unit directly on the top of the air jack skate body.
2. Ensure that the three bolt holes are correctly aligned between the top and the base, so that both openings face the correct orientation.
3. Insert the three included MC6S M8x20 stainless steel bolts into the mounting holes.
4. Verify proper alignment, then tighten the bolts evenly to a torque of 17 Nm.

Optional thread locker can be added, but is not required if accurate tightening torque is applied.

Tightening torque specifications

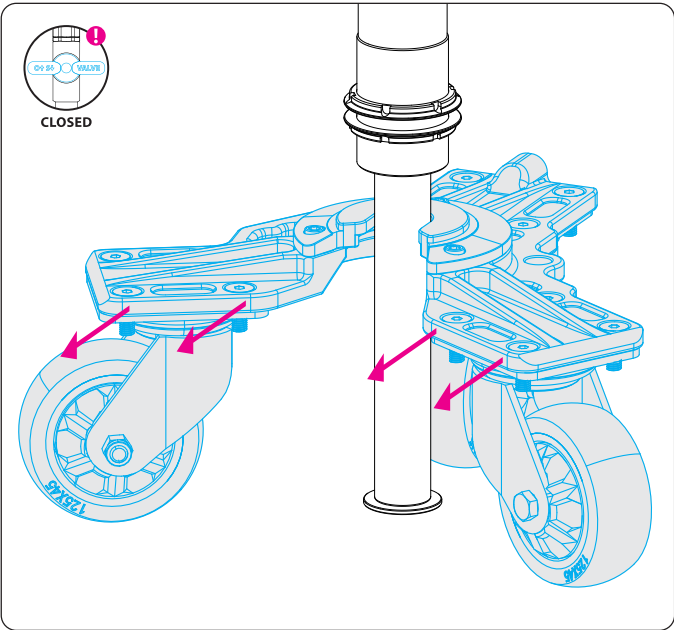
For safe and long lasting function, make sure to use the intended tightening torque when assembling the air jack skates.

Wheel assembly : 40-45 Nm

Top plate assembly : 17 Nm

No additional thread locker is required for either the wheel or top plate assembly.

Air jack skate instruction

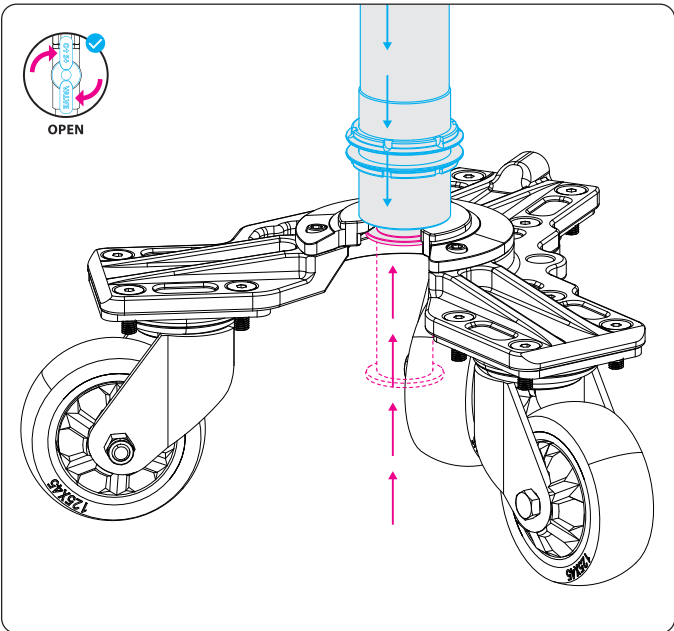


POSITIONING OF THE AIR JACK SKATES :

When the Air Jacks are fully raised to their top position and still under pressure, position each Air Jack Skate around the extended piston. The skate must be placed in its innermost position.

All used Air Jacks must be fully raised, and every Air Jack must be supported by an Air Jack Skate. Ensure that each skate is positioned on a flat, stable surface and perfectly aligned with the raised piston.

Important: Air Jack Skates must not be used on uneven surfaces and are not recommended for use on gravel, soil, or uneven asphalt.



LOWERING THE VEHICLE ON TO THE SKATES :

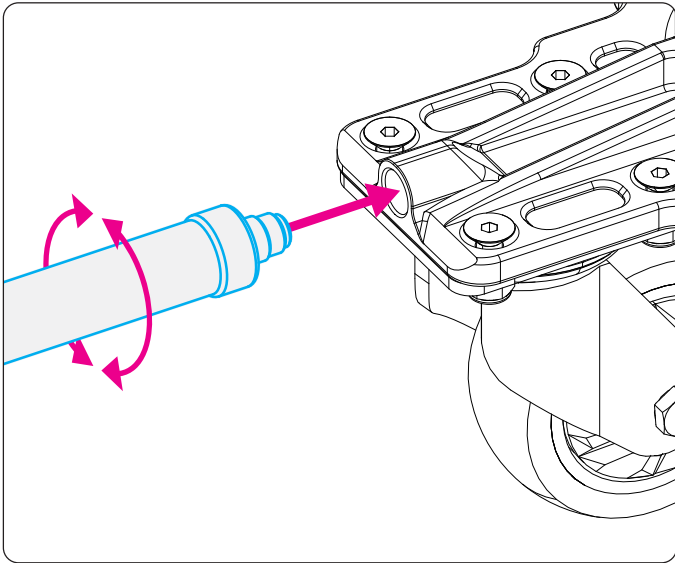
By releasing the pressure within the air jack system, the vehicle will lower itself over the skates, when lowered onto the top of the skates, the piston will raise up into its top position and lock into place.

Make sure that the air jack piston can raise without interfering with the skate and it rests in its intended

and most upper position.

The vehicle should now be resting on the top of the skate top and the air jack foot should be located in its top position.

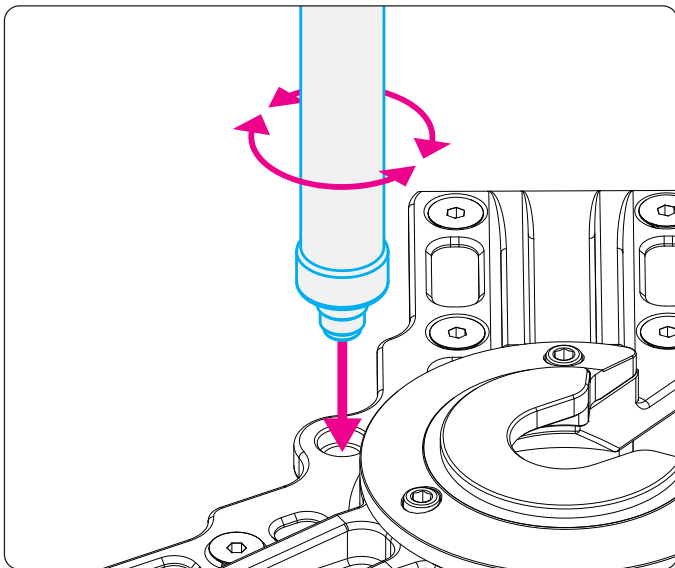
If the foot isn't able to raise fully, you must pressurize the system once again and raise the vehicle to try to relocate the air jack skates to an ideal position.



USING THE OPTIONAL CARBON HANDLES :

In addition to the integrated handles on each Air Jack Skate, we also offer detachable carbon fiber handles as an accessory. These handles are designed to make it even easier to position the skates underneath the vehicle, especially in tight spaces where direct access is limited.

The carbon fiber handles are available in three different lengths and can be quickly mounted in the designated threaded attachment point on the skate.




EASY STORAGE OF SKATES AND HANDLES :

When the Air Jack Skates are not in use, the detachable carbon fiber handles can be mounted in a top-mounted position. This makes it easy to lift and move the skates around the workshop while also providing a convenient way to store the handles when they are not needed for under-car positioning.

Nuke Performance AB, Sweden – All rights reserved.


Safety disclaimer

EN



INCORRECT INSTALLATION CAN CAUSE SERIOUS DAMAGE TO THE PRODUCT AND VEHICLE. AS A RESULT, ACCIDENTS, PROPERTY DAMAGE AND PERSONAL INJURY ARE POSSIBLE. INSTALLATION MAY ONLY BE CARRIED OUT BY EXPERTS. MAKE SURE TO ALWAYS USE ALL NECESSARY SAFETY EQUIPMENT. THE MANUFACTURER IS NOT LIABLE FOR DAMAGE CAUSED BY IMPROPER INSTALLATION.

DE



BEI UNSACHGEMÄßER INSTALLATION KÖNNEN SCHWERE SCHÄDEN AN PRODUKT UND MOTOR ENTSTEHEN. INFOLGEDESSEN SIND UNFÄLLE, SACH- UND PERSONENSCHÄDEN MÖGLICH. DER EINBAU DARF NUR DURCH GESCHULTES FACHPERSONAL MIT DER NOTWENDIGEN SICHERHEITSAUSRÜSTUNG ERFOLGEN. DER HERSTELLER HAFTET NICHT FÜR SCHÄDEN DURCH NICHT FACHGERECHTE MONTAGE.

ES




UNA INSTALACIÓN INCORRECTA PUEDE CAUSAR SERIOS DAÑOS TANTO AL PRODUCTO COMO AL VEHÍCULO. COMO CONSECUENCIA, ES PROBABLE QUE SE PRESENTEN ACCIDENTES, DAÑOS MATERIALES Y LESIONES PERSONALES. LA INSTALACIÓN SÓLO DEBE SER REALIZADA POR EXPERTOS. CERCÍO RESE DE UTILIZAR SIEMPRE TODO EL EQUIPO DE SEGURIDAD NECESARIO. EL FABRICANTE NO SE HACE RESPONSABLE DE LOS DAÑOS CAUSADOS POR UNA INSTALACIÓN INCORRECTA.

FR



UNE INSTALLATION NON CONFORME PEUT PROVOQUER DES DOMMAGES SÉRIEUX SUR LE PRODUIT ET LE VÉHICULE. PAR CONSÉQUENT, DES ACCIDENTS, DES DÉGÂTS MATÉRIELS ET DES BLESSURES CORPORELLES SONT POSSIBLES. L'INSTALLATION DOIT UNIQUEMENT ÊTRE EFFECTUÉE PAR DES EXPERTS. ASSUREZ-VOUS DE TOUJOURS UTILISER TOUS LES ÉQUIPEMENTS DE SÉCURITÉ NÉCESSAIRES. LE FABRICANT NE PEUT ÊTRE TENU POUR RESPONSABLE EN CAS D'INSTALLATION NON CONFORME.

SE



FELAKTIG INSTALLATION KAN ORSAKA ALLVARLIGA SKADOR PÅ PRODUKT OCH FORDON, SOM ETT RESULTAT ÄR OLYCKOR, EGENDOMSSKADOR OCH PERSONSKADOR MÖJLIGA. INSTALLATIONEN FÄR ENDAST UTFÖRAS AV EXPERTER. SE TILL ATT ALLTID ANVÄNDA NÖDVÄNDIG SÄKERHETSUTRUSTNING. TILLVERKAREN ANSVARAR INTE FÖR SKADOR ORSAKADE AV FELAKTIG INSTALLATION.

