

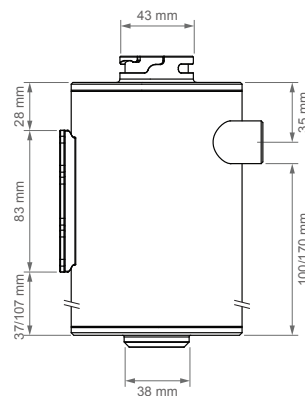
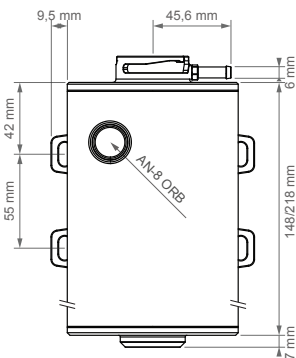
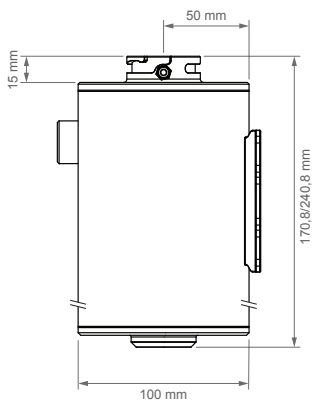
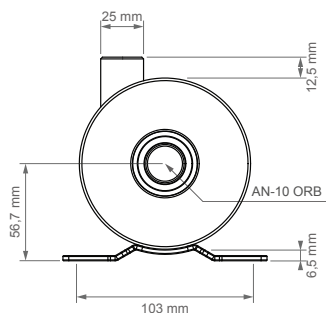
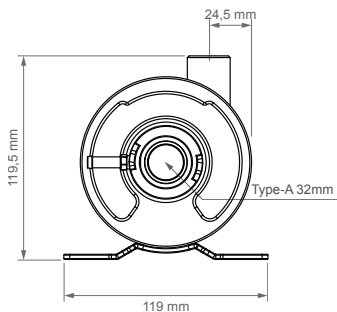
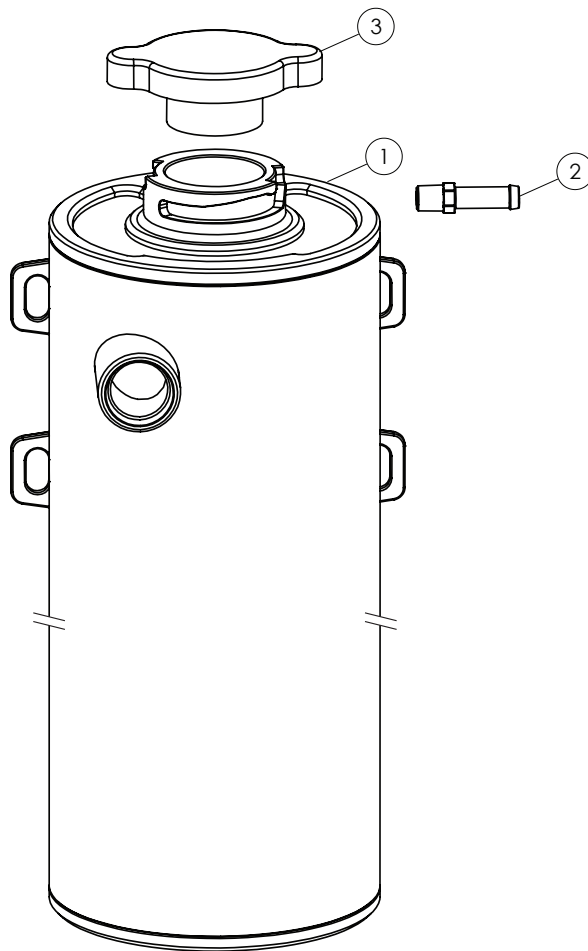
Coolant Expansion Tank, 1.0L / 1.5L

1.0L Part # 455-01-201 EAN # 7340209511192
 1.5L Part # 455-01-202 EAN # 7340209511208

Assembly Instructions | © Nuke Performance AB 2026

For more information visit : www.nukeperformance.com

- 1 One piece aluminum body with integrated bracket
- 2 1/16 NPT Barb Fitting to 6mm hose
Part # 300-10-137
- 3 Optional Type-A radiator cap (not included)
Part # 452-01-011 / 452-01-013 / 452-01-015 / 450-01-020



Coolant Expansion Tank, 1.0L specifications

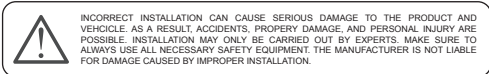
For more information about specifications, visit our product page on our website.
 Nuke Performance : www.nukeperformance.com



Expansion tank volume	1.0 liter (0.26 gal)	Reservoir design	Single chamber design
Radiator cap type	Type-A	Pressure compatibility	0.0 - 2.5 BAR (0.0 - 36.25 PSI)
Inlet port thread	AN-8 ORB	For motorsports use	YES, only for motorsports use
Outlet port threads	AN-10 ORB	Weight	498g (1.09lb)
Overflow port thread	1/16 NPT (6mm barb included)	Part # / EAN	455-01-201 / 7340209511192

Coolant Expansion Tank, 1.5L specifications

Expansion tank volume	1.5 liter (0.40 gal)	Reservoir design	Single chamber design
Radiator cap type	Type-A	Pressure compatibility	0.0 - 2.5 BAR (0.0 - 36.25 PSI)
Inlet port thread	AN-8 ORB	For motorsports use	YES, only for motorsports use
Outlet port threads	AN-10 ORB	Weight	616 g (1.35 lb)
Overflow port thread	1/16 NPT (6mm barb included)	Part # / EAN	455-01-202 / 7340209511208



Information:

Design combined with top quality performance.
 For more information about the products and retailers visit www.nukeperformance.com

