

Volvo 740/940 Fuel Pump Hanger

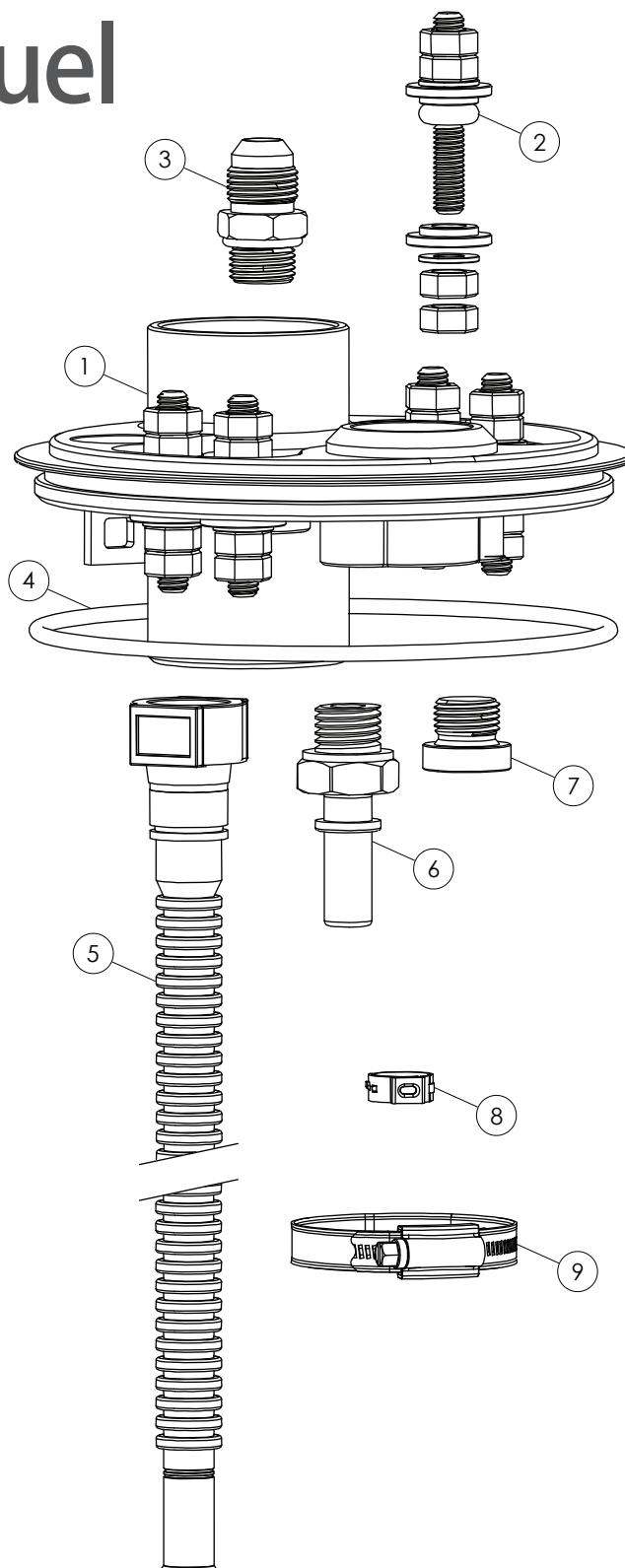
Part # 170-01-101

Assembly Instructions | © Nuke Performance AB 2026

For more information visit : www.nukeperformance.com

- 1** Top lid for Volvo 740 / Volvo 940
- 2** M6 bolt electrical connector
Part # 150-10-105
- 3** AN-6 ORB to AN-6 Male Vent Fitting
Part # 700-04-101
- 4** Viton O-ring 111.0 x 3.0mm
Part # 1700-10-002
- 5** 9.49 SAE fuel hose for ID8 / ID10 connection *
Part # 150-20-307 / 150-20-308
- 6** 1/4 BSPP to SAE 9.49 Fitting, 29mm
Part # 300-10-115
- 7** 1/4 BSPP Plug
Part # 700-01-106
- 8** Single ear hose clamp 10.3-12.8
Part # 1500-20-101
- 9** Hose clamp 44-56mm for fuel pump attachment

* Hoses for both 8 mm and 10 mm outlet fuel pumps are included — use the one that fits your pump



OEM fuel level sender integration, ensuring full function of the factory fuel gauge.

The fuel pump hanger integrates the OEM fuel level sender, which clips directly onto the top lid without any modification.

The OEM fuel level sender is required for the fuel pump hanger kit, as it reuses the factory fuel pump location.

OEM fuel filler hose integration.

The fuel pump hanger is designed to use the OEM ID 40mm fuel filler hose and is not compatible with the Nuke Performance corrugated fuel filler hose.

Can the fuel pump hanger fit two internal fuel pumps?

The fuel pump hanger kit is primarily designed for a single aftermarket fuel pump, but the top lid is prepared with an extra 1/4 BSPP port and electrical connector to support future dual-pump upgrades.

A dual in-tank setup requires an additional single fuel pump kit and a custom mounting solution, with standard 39 mm fuel pumps recommended for easiest fitment.

Nuke Performance Volvo 740/940 Fuel Pump Hanger specifications

For more information about specifications, visit our product page on our website.

Nuke Performance : www.nukeperformance.com

Compatibility	Volvo 740 1984-1992 / 940 1991-1998	For motorsports use	YES, only for motorsports use
Electrical connectors	x 5 (max 125 ampere / each *)	Outlet port, thread	AN-10 ORB - no fitting included
Outer diameter	123.0 mm (4.84")	Return port, thread	AN-8 ORB - no fitting included
Weight (with OEM level sender)	871 g (1.92 lb)	Vent port, thread	AN-6 ORB - AN-6 Male fitting included
Fits number of fuel pumps	1 x High-pressure fuel pump **	Fuel compatibility	Petrol, Gasoline, Ethanol, E85, Methanol
Filler hose connection	40.0 mm (1.57"), for OEM fuel filler hose	Part # / EAN	170-01-101 / 7340209511086

* For reference only

** For dual fuel pump setup, read production description on website



INCORRECT INSTALLATION CAN CAUSE SERIOUS DAMAGE TO THE PRODUCT AND VEHICLE. AS A RESULT, ACCIDENTS, PROPERTY DAMAGE, AND PERSONAL INJURY ARE POSSIBLE. INSTALLATION MAY ONLY BE CARRIED OUT BY EXPERTS. MAKE SURE TO ALWAYS USE ALL NECESSARY SAFETY EQUIPMENT. THE MANUFACTURER IS NOT LIABLE FOR DAMAGE CAUSED BY IMPROPER INSTALLATION.



Information:

Design combined with top quality performance.
For more information about the products and retailers visit
www.nukeperformance.com

nuke
performance