

AN-8 ORB Fuel Rail

Part # 120-**-*** Part number depending on specified version

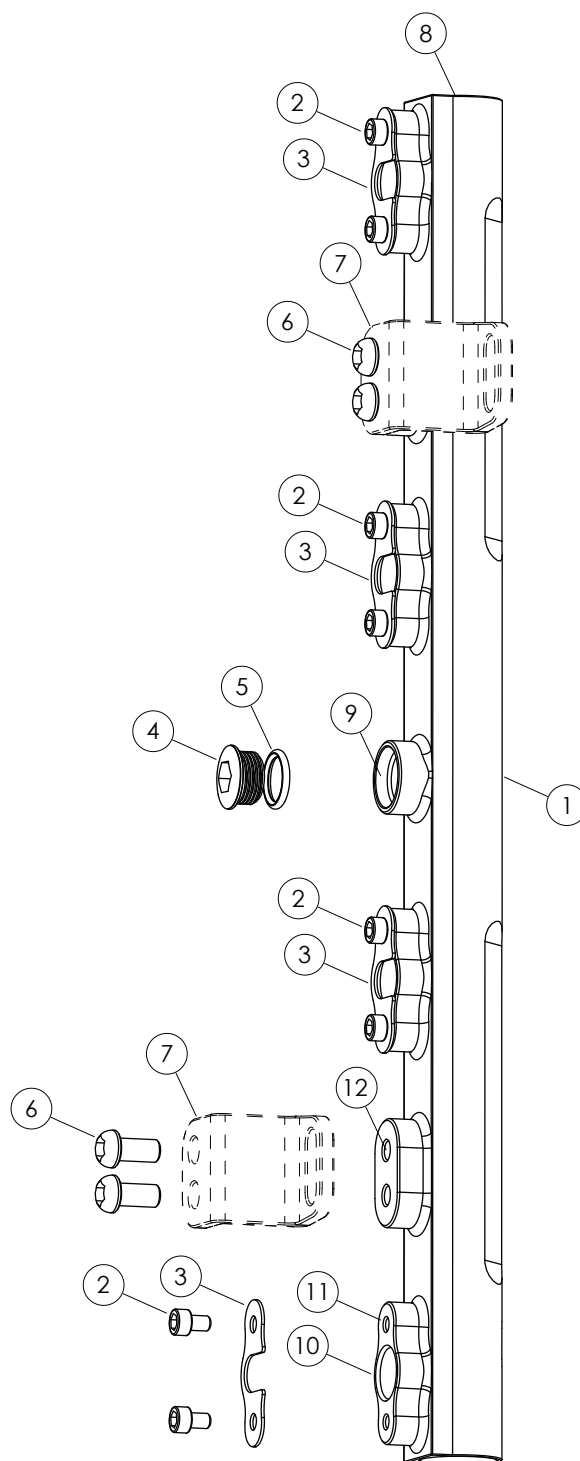
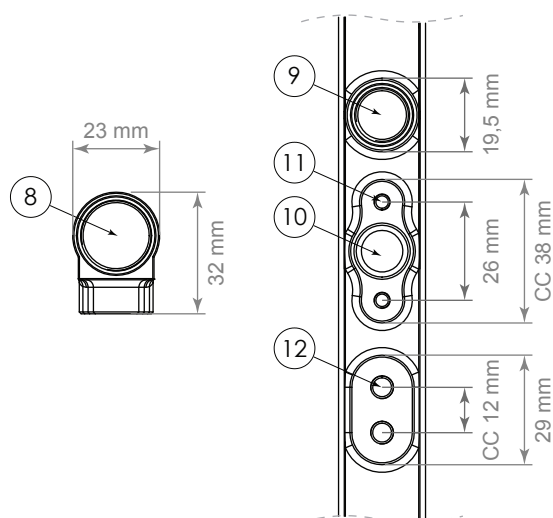
Assembly Instructions | © Nuke Performance AB 2024

For more information visit : www.nukeperformance.com

- 1** Machined model specific aluminum fuel rail *
3, 4, 5, 6cyl versions available - depending on specific version
- 2** MC6S M4x6 Stainless steel bolt
Part # 300-10-104
- 3** Stainless steel injector safety clip
Part # 100-20-101
- 4** AN-6 ORB Plug - included with all fuel rails
Part # 700-04-115
- 5** O-ring 11.89x1.98 mm Viton
Part # 700-20-102
- 6** K6S M6x10 Stainless steel bolt **
Part # 100-10-208 - May vary depending on specific version
- 7** Model specific mounting hardware / brackets *
Model specific part, for spare part contact manufacturer
- 8** AN-10 ORB / 7/8"-14 Female main port
- 9** AN-6 ORB / 9/16"-18 Female side port
- 10** Specified for Bosch EV14 style (14mm) injectors
If rail is specified for ex 11mm, this is explained in the part name
- 11** M4 Thread for injector safety clips
- 12** M6 Thread for model specific brackets

* Model specific part with big variety between versions

** Most common version, some variety between versions



Nuke Performance AN-8 ORB Full Flow Fuel Rail specifications

For more information about specifications, visit our product page on our website.

Nuke Performance : www.nukeperformance.com



Injector type specification	Bosch EV14-style injector *	Length	Depending on model specific version **
End inlet / outlet threads	2 x AN-8 ORB	Height	32.0 mm (1.26")
Side inlet / outlet thread	1 x AN-6 ORB	CC in between injectors	Depending on model specific version **
Internal bore	18.0 mm (0.69")	Fuel compatibility	Petrol, Gasoline, Ethanol, E85, Methanol
Width	23.0 mm (0.90")	For motorsports use	YES

* Specified injector for each fuel rail is noted on each product page

** Model specific part with big variety between versions, dimensions found on each product page



INCORRECT INSTALLATION CAN CAUSE SERIOUS DAMAGE TO THE PRODUCT AND VEHICLE. AS A RESULT, ACCIDENTS, PROPERTY DAMAGE, AND PERSONAL INJURY ARE POSSIBLE. INSTALLATION MAY ONLY BE CARRIED OUT BY EXPERTS. MAKE SURE TO ALWAYS USE ALL NECESSARY SAFETY EQUIPMENT. THE MANUFACTURER IS NOT LIABLE FOR DAMAGE CAUSED BY IMPROPER INSTALLATION.



Information:

Design combined with top quality performance.
For more information about the products and retailers visit
www.nukeperformance.com

nuke
PERFORMANCE