

Additional Injector Holder, AN-8 ORB

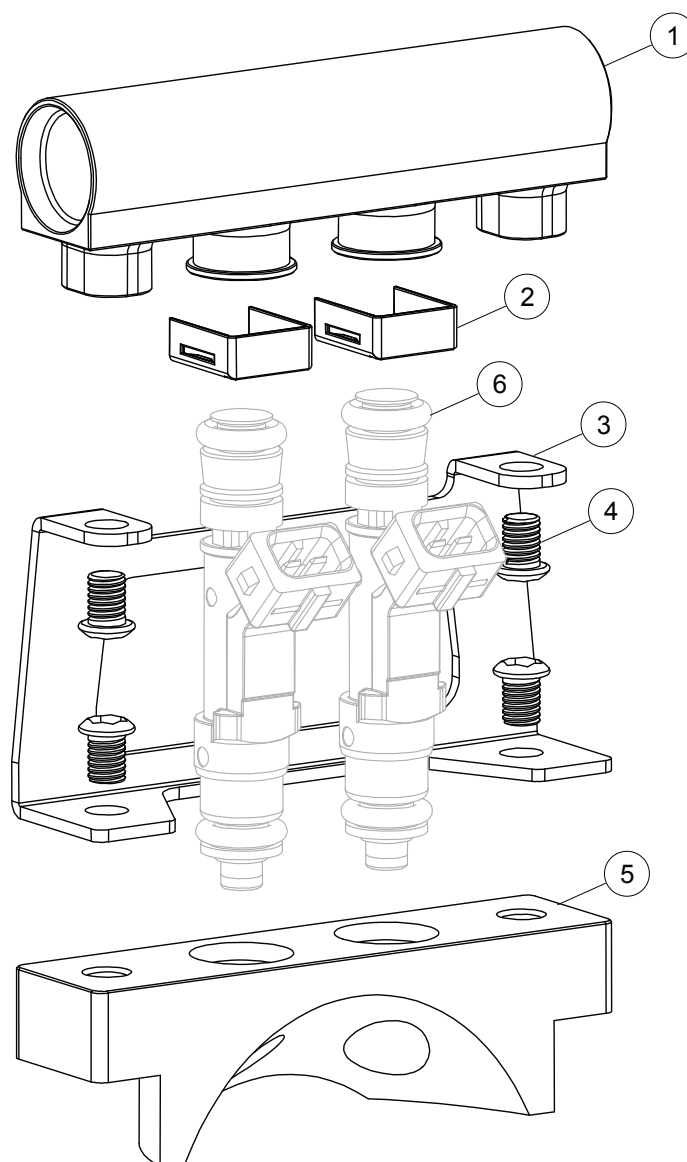
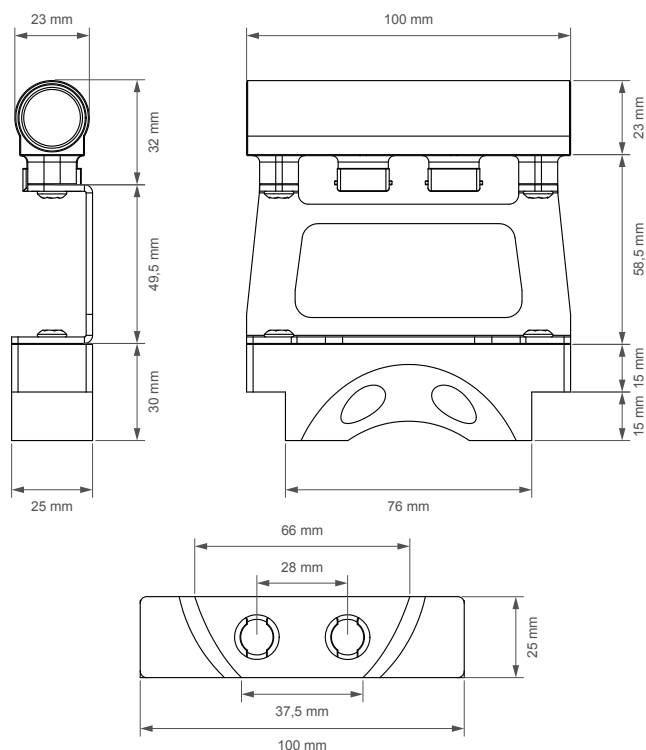
Part # 100-10-201 EAN # 7340209501186

Assembly Instructions | © Nuke Performance AB 2026

For more information visit : www.nukeperformance.com

NO.	Spare part #	Description
1	N/A	Billet fuel rail profile, AN-8 ORB ports
2	135-01-005	Bosch OEM injector safety clip
3	1200-10-165	Stainless steel bracket
4	100-10-208	K6S M6x10 Stainless steel bolt
5	1000-10-002	Aluminum weld flange
6	N/A	EV14 Long injectors (not included) *

* Delivered without injectors, needs to be purchased separately



Additional Injector Holder, AN-8 ORB, specifications

For more information about specifications, visit the product page on our website.

Nuke Performance : www.nukeperformance.com



Injector compatibility	EV14 L injectors	Width	100.0 mm (3.93")
Injector quantity	2 injectors (not included)	Depth	25.0 mm (0.98")
Inlet / outlet ports	AN-8 ORB (no fittings included)	Height (total)	111.5 mm (4.39")
Intake pipe compatibility	3" aluminum piping	Injector CTC	28.0 mm (1.10")
Injector angle	55-degree injector angle	Weight	237.0 g (8.36oz)
Mounting method	Weld-on aluminum base	For motorsports use	YES, for motorsports use only
Fuel compatibility	Petrol / Gasoline / E85 / E100 / Methanol	Part # / EAN	100-10-201 / 7340209501186



INCORRECT INSTALLATION CAN CAUSE SERIOUS DAMAGE TO THE PRODUCT AND VEHICLE. AS A RESULT, ACCIDENTS, PROPERTY DAMAGE, AND PERSONAL INJURY ARE POSSIBLE. INSTALLATION MAY ONLY BE CARRIED OUT BY EXPERTS. MAKE SURE TO ALWAYS USE ALL NECESSARY SAFETY EQUIPMENT. THE MANUFACTURER IS NOT LIABLE FOR DAMAGE CAUSED BY IMPROPER INSTALLATION.



Information:

Design combined with top quality performance.
For more information about the products and retailers visit
www.nukeperformance.com

nuke
PERFORMANCE