

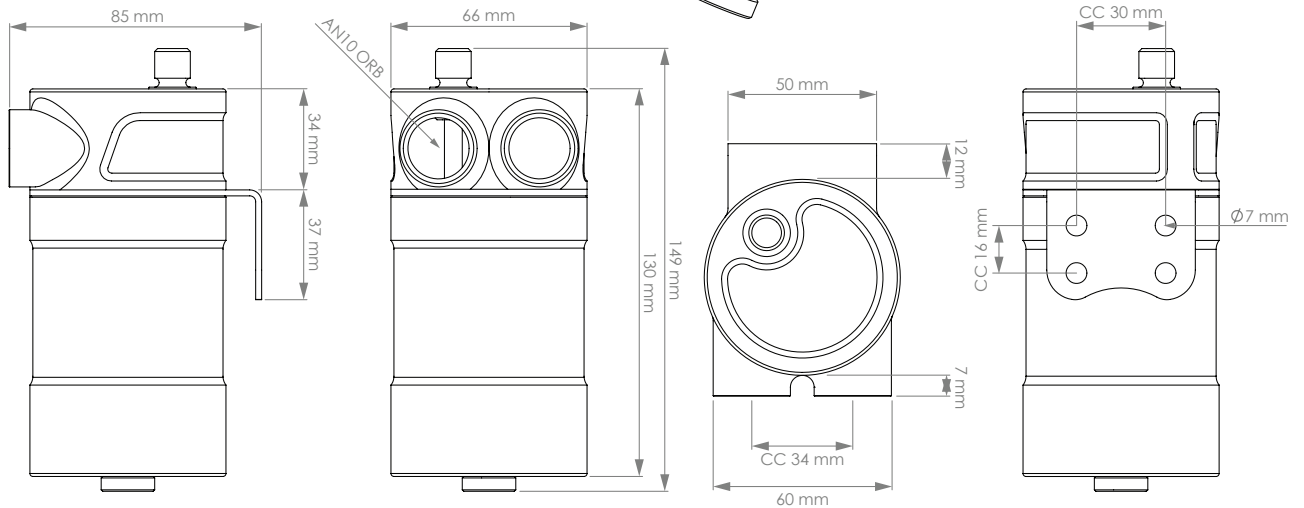
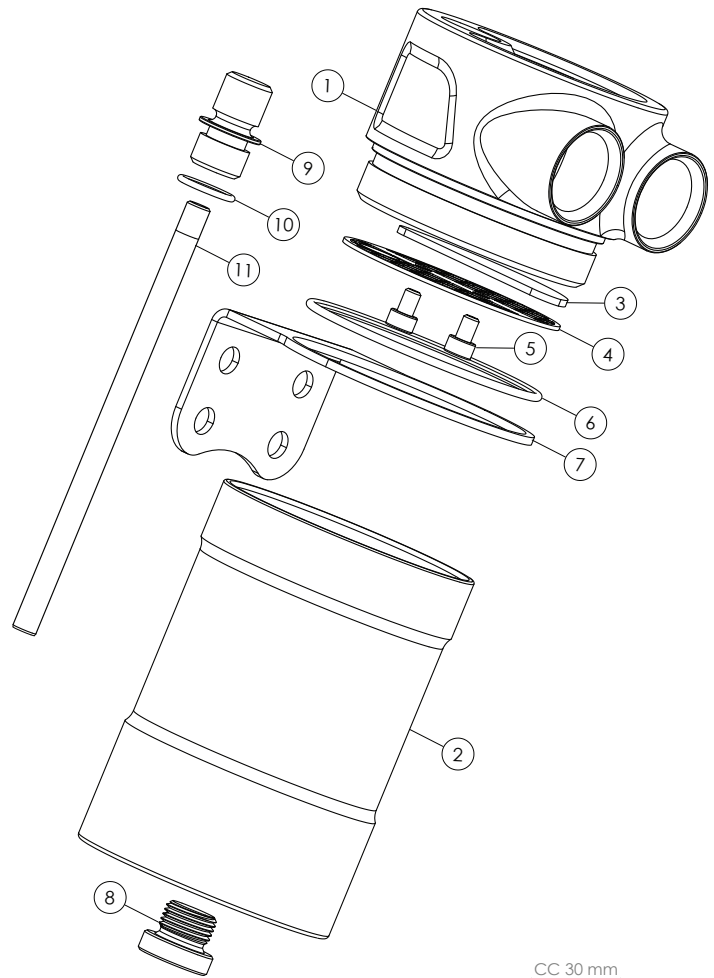
Universal Catch Can 0.25 liter

Part # 270-01-201

Assembly Instructions | © Nuke Performance AB 2022

For more information visit : www.nukeperformance.com

- 1** Billet top housing with dual AN-10 ORB threads
- 2** Billet 0.25 liter housing with 1/4 BSPP thread
- 3** 300 micron semicircle filter disc
Part # 2700-06
- 4** Stainless steel baffle and filter disc bracket
- 5** 2 x K6S M4x6 Stainless steel bolts
Part # 100-10-211
- 6** O-ring 58x2 mm Viton
Part # 2700-05
- 7** Stainless steel mounting bracket
- 8** 1/4 BSPP Plug
Part # 700-01-106
- 9** Dipstick head, low profile
- 10** O-ring 10x2.5 mm Viton
Part # 265-10-208
- 11** Dipstick bar for 0.25 liter catch can



Nuke Performance Universal Catch Can 0.25 liter specifications

For more information about specifications, visit our product page on our webiste.

Nuke Performance : www.nukeperformance.com



Universal Catch Can Part #	270-01-201	Drainage port / thread	1 x 1/4 BSPP, plug included
Catch can capacity	0.25 liter (1,05 US cups)	Dipstick	YES, aluminum dipstick included
Inlet port / thread	1 x AN-10 ORB	Bracket	360° rotating stainless steel bracket
Outlet port / thread	1 x AN-10 ORB	Setup available	Recirculating / Atmospheric
Filtered outlet port	YES, 300-micron filter disc	Weight	439 g (0.97 lb)
Replaceable filter disc	YES, Part # 2700-06	For motorsport use	YES



INCORRECT INSTALLATION CAN CAUSE SERIOUS DAMAGE TO THE PRODUCT AND VEHICLE. AS A RESULT, ACCIDENTS, PROPERTY DAMAGE, AND PERSONAL INJURY ARE POSSIBLE. INSTALLATION MAY ONLY BE CARRIED OUT BY EXPERTS. MAKE SURE TO ALWAYS USE ALL NECESSARY SAFETY EQUIPMENT. THE MANUFACTURER IS NOT LIABLE FOR DAMAGE CAUSED BY IMPROPER INSTALLATION.



Information:

Design combined with top quality performance.
For more information about the products and retailers visit www.nukeperformance.com

nuke
PERFORMANCE